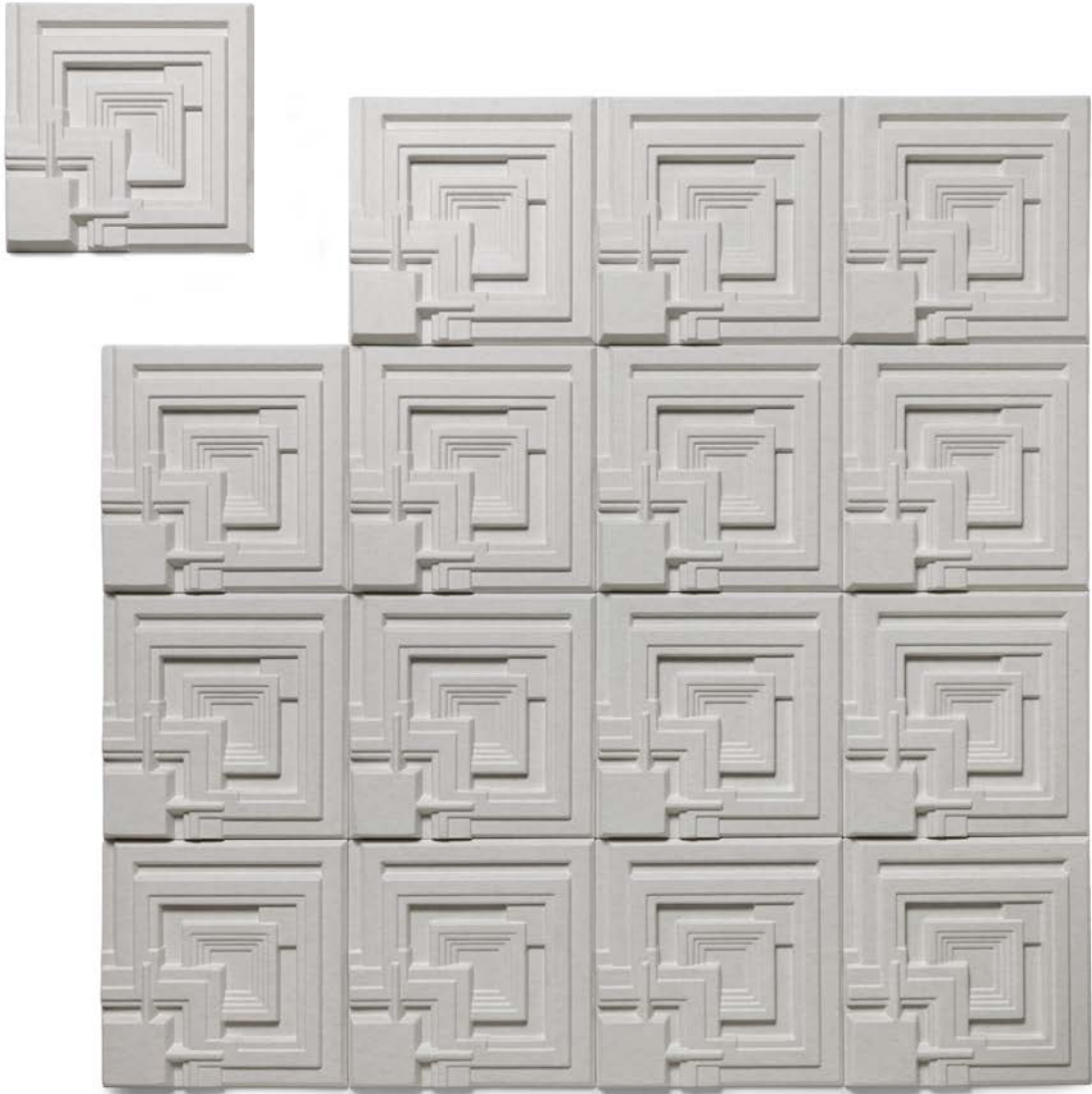


# Soundwave® Ennis by Frank Lloyd Wright



**PRODUCT INFORMATION**

Frank Lloyd Wright's mesmerising pattern for the concrete blocks used to build the Ennis House, the last remaining textile block house, has served as futuristic backdrop in movies and made an imprint in history books. Now, the Ennis pattern has been applied on Soundwave©, Offecct's trademark acoustic panels made of recyclable moulded polyester, and will be used to improve the sound environments in past, present and future architecture, read more at [franklloydwright.org](http://franklloydwright.org)

"The Ennis block pattern is not only beautiful, it's geometry also inhabits the potential to absorb sound. By keeping Wright's design intact but transferring it from concrete which lacks acoustic properties to our felt material, it becomes a high performing acoustic panel", says Anders Englund, Design Manager at Offecct.

**ARCHITECT**

Frank Lloyd Wright (1867-1959) was an American architect widely recognised for creating the first domestic American architectural style, referred to as the Prairie Style. Wright believed we all have the right to live a beautiful life regardless of economic or social status and in his work he pioneered the open floor plan, championed new building techniques and cultivated a tradition for the use of natural and local materials. Wright considered a buildings interior as important as its exterior, designing everything from furniture to graphics, and by doing so started the tradition of the multidisciplinary architect office which is common practice today. Landmark buildings that have become subject to world wide pilgrimage for generations of architects, such as Falling Water (1935) and the Solomon R. Guggenheim Museum (1956), further establishes Wright as one of the greatest architects of the twentieth century.

For more information see [www.offecct.com](http://www.offecct.com)



FRANK LLOYD WRIGHT



ENNIS HOUSE

**TECHNICAL INFORMATION**

Ennis is a lightweight sound absorber in the upper frequency range (500 Hz and above). These panels help reduce disturbing reflections of environmental noise such as voices, telephones etc. Recyclable molded polyester fiber in offwhite.

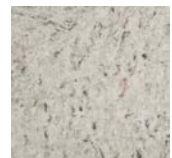
**SIZE:** 585 x 585 x 500 mm.



OFFWHITE

**ACCESSORIES**

Separate filling made of recycled textile and PET. Basfill is being placed inside the Soundwave panels in order to improve sound absorption in the lower frequency range (150-500 Hz). Basfill is available as accessories to all panels except for Luna and Pix.



BASFILL